

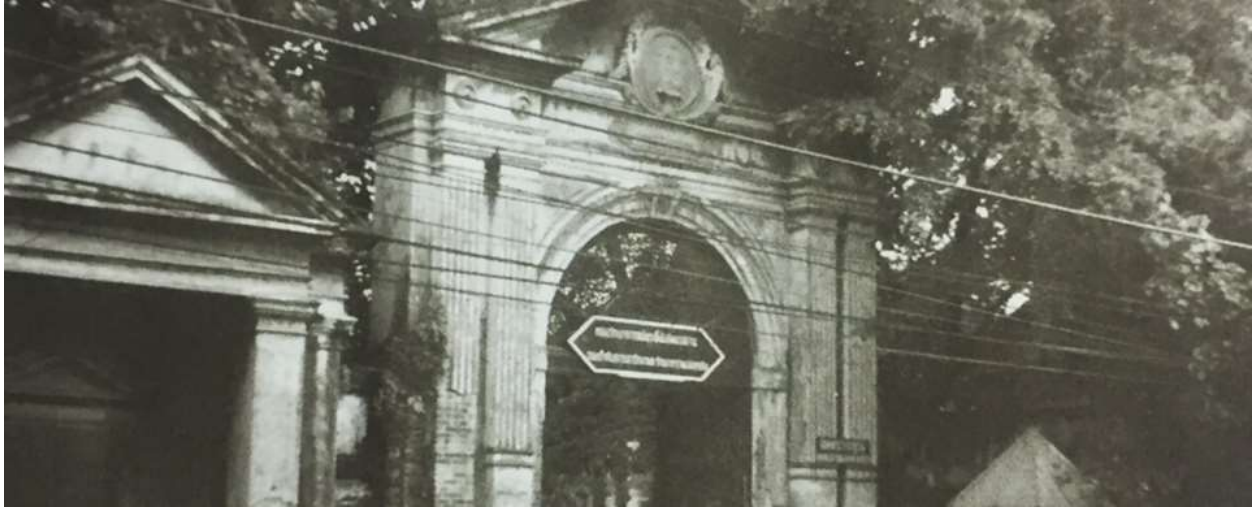
Unit 5

Overviewing Suan Sunandha Rajabhat University

A. Read this article and answer the following questions.

University Timeline

1932



The last Royal **Inner Court** was **transformed** to Suan Sunandha Wittayalai School.

1937



Suan Sunandha Wittayalai School was **elevated** to Suan Sunandha Wittayalai or Suan Sunandha College.

1975



Suan Sunandha College was raised to Suan Sunandha Teacher's College.

1992



Suan Sunandha Teacher's College was **uplifted** to Rajabhat Institute Suan Sunandha.

2004



Rajabhat **Institute** Suan Sunandha was elevated to Suan Sunandha Rajabhat University.

Suan Sunandha Rajabhat University. (n.d.). *University Timeline*. Retrieved February 10, 2024 from https://ssru.ac.th/en/about_university-timeline.php

1. In which year was the last Royal Inner Court transformed into Suan Sunandha Wittayalai School?

2. What significant change occurred in 1937 regarding Suan Sunandha Wittayalai School?

3. In which year was Suan Sunandha College raised to Suan Sunandha Teacher's College?

4. When was Suan Sunandha Teacher's College uplifted to Rajabhat Institute Suan Sunandha?

5. What significant transformation occurred in 2004 regarding Rajabhat Institute Suan Sunandha?

Vocabulary

1. Inner Court ฝ่ายใน

Example: Only members of the royal family were allowed in the Inner Court of the palace.

2. transform แปลง, เปลี่ยนแปลง

Example: The old building was transformed into a modern office space.

3. elevated ยกกระต๊ับ

Example: She was elevated to the position of team leader due to her excellent performance.

4. uplift ยกกระต๊ับ

Example: The news of their success uplifted the spirits of the entire team.

5. Institute สถาบัน

Example: He enrolled in an institute to study computer programming.

B. Fill in the blanks with appropriate words.

elevated	academic	transformation	history (x2)
----------	----------	----------------	--------------

Guide: Welcome to Suan Sunandha Rajabhat University! I'm your guide for today. Before we start our tour, let me share a bit of the university's fascinating _____(1)_____. In 1932, the last Royal Inner Court underwent a significant _____(2)_____ and became Suan Sunandha Wittayalai School.

Visitor: Oh, that's interesting! So, the university has a royal _____(3)_____?

Guide: Absolutely! The transformation continued over the years. In 1937, Suan Sunandha Wittayalai School was _____(4)_____to Suan Sunandha Wittayalai or Suan Sunandha College. It marked a shift towards becoming an _____(5)_____institution.

excellence	raised	teacher's	happened	uplifted	next
------------	--------	-----------	----------	----------	------

Visitor: That's quite a journey. What _____(6)_____next?

Guide: Well, the evolution continued. In 1975, Suan Sunandha College was _____(7)_____to Suan Sunandha Teacher's College. It's amazing how the university progressed from a school to a college and then to a _____(8)_____college.

Visitor: Indeed, it's a significant transformation. What about the _____(9)_____ step?

Guide: In 1992, the Teacher's College took another step forward and was _____(10)_____ to Rajabhat Institute Suan Sunandha. This reflected the institution's dedication to education and academic _____(11)_____.

growth	latest	milestone	environment	present
--------	--------	-----------	-------------	---------

Visitor: The university seems to have a rich academic history. What's the _____(12)_____ development?

Guide: The latest _____(13)_____ occurred in 2004 when Rajabhat Institute Suan Sunandha was elevated to its current status as Suan Sunandha Rajabhat University. It's been a remarkable journey of _____(14)_____ and academic achievements.

Visitor: Wow, that's impressive! The university has come a long way.

Guide: Indeed, and now, let's dive into the vibrant _____(15)_____ of Suan Sunandha Rajabhat University. Our tour will showcase the various faculties, landmarks, and the thriving academic _____(16)_____. If you have any questions along the way, feel free to ask. Are you ready to explore?

Visitor: Absolutely! Let's get started.

Here are some examples of language used to position things or places in a guided tour.

1. Spatial Positioning:

- **"To your left,** you'll find the main entrance of the university, adorned with a striking fountain."
- **"As we move forward,** notice the vibrant student centers on your right, buzzing with activity."

2. Directional Guidance:

- **"If you look ahead,** you'll see the iconic Faculty of Arts building, a hub for creativity and artistic expression."
- **"Turning to your right,** you'll spot the College of Logistics and Supply Chain, strategically located near the Nakhon Pathom Campus."

3. **Sequential Orientation:**

- "Our next stop is the 35 Building, which houses the Faculty of Humanities and Social Sciences. Follow me as we head inside."
- "Let's proceed in chronological order. **First**, we'll explore the historical landmarks that date back to the university's early years."

4. **Pointing Out Specific Locations:**

- "Over there, you can see the Rajabhat Institute Heritage Area, a dedicated space preserving the university's rich history."
- "Direct your attention to Building No. 43; that's where you'll find the Faculty of Engineering and Industrial Technology."

5. **Descriptive Positioning:**

- "Nestled amidst the green spaces, the Graduate School provides a serene environment for advanced studies."
- "Standing at the heart of the campus, the Flower of the University, 'Kaew Chao Jom,' adds a touch of natural beauty to our surroundings."

6. **Interactive Positioning:**

- "As we walk along, feel free to explore the academic facilities on your own. They're located just beyond the main courtyard."
- "If you have any questions about the locations we've covered so far, don't hesitate to ask our friendly guides stationed along the route."

C. Complete the monologue with suitable expressions.

after	over there	let me begin	finally
then	along the route	direct your attention to	

Today, let's dive into the exciting history and interesting things about Suan Sunandha Rajabhat University. Join us on a journey to explore the amazing aspects of this special place.

_____ (1) _____ by introducing a brief timeline of Suan Sunandha Rajabhat University. In 1932 the last Royal Inner Court was transformed to Suan Sunandha Wittayalai School. After that Suan Sunandha Wittayalai School was elevated to Suan Sunandha Wittayalai or Suan Sunandha College in 1937. Then Suan Sunandha College was raised to Suan Sunandha Teacher's

College in 1975. Later, The Teacher's College was uplifted to Rajabhat Institute Suan Sunandha in 1992. Rajabhat Institute Suan Sunandha was, then, elevated to Suan Sunandha Rajabhat University in 2004.

Suan Sunandha Rajabhat University is a home to 6 faculties, 8 colleges, and one Graduate School spread across the main campus, Nakhon Pathom Campus, and Samut Songkhram Campus. Additionally, there are education centers in Udon Thani and Ranong.

_____ **(2)** _____ the 35 Building where Faculty of Humanities and Social Sciences is located. It offers 7 undergraduate programs which are 1. Thai Language Program, 2. English Major Program, 3. Business English Program, 4. Japanese Language Program, 5. Chinese Language Program, 6. Department of Geography and Geoinformatics Program, and 7. Social and Cultural Development Management Program comprising the branches of Social Development Management and Cultural Management.

_____ **(3)** _____, you can see the co-working spaces for students around 35 Building. This is where the fun things are – students having a good time, having meetings, and doing exciting stuff to make their university life more colorful!

This 6-story building houses modern classrooms, big rooms for lessons, and cool labs with the latest technology. It's where all the fun learning happens!

_____ **(4)** _____ a hard day, you can take a break in the cool green areas and gardens around the campus. It's like a peaceful getaway from all the studying, a place to chill and enjoy nature.

_____ **(5)** _____, immerse yourself in the artistic and cultural expressions of our rich history. Visit our arts and cultural museums, where creativity flourishes, and diversity is celebrated.

_____ **(6)** _____, experience the diverse culinary options available in the university's cafeterias and dining areas around the campus.

If you have any questions about the locations we've covered so far, don't hesitate to ask our friendly guides stationed _____ **(7)** _____.

D. Practice the monologue with your class.

References

Suan Sunandha Rajabhat University. (n.d.). *University Timeline*. Retrieved February 10, 2024 from https://ssru.ac.th/en/about_university-timeline.php

Faculty of Humanities and Social Sciences. (n.d.) *History*. Retrieved February 10, 2024 from <https://fit.ssru.ac.th/en/page/history>